

## Features

- ◇ 2 position 2 port reversing valve (normally open) with G1/8 and G1/4 air entry ports returns the air signal through the vacuum switch to realize the air supply opening and closing and energy saving.
- ◇ The small valve can control a large flow of compressed air.



## How to order

### ZVAA - G1F

①

②

#### ① Series

**ZVAA**

#### ② Connection thread

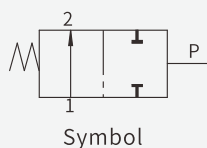
**G1F** - G1/8 Female thread

**G2F** - G1/4 Female thread

## Technical parameters

Air supply pressure (bar)	Output function	Ambient temperature (°C)	Material
3.5-7	NO(Normally open)	0-60°C	Aluminum alloy

## Symbol



## Dimensions (mm)

